

Introduction

Fulham's **elitedali**™ MultiSensor10 is a combined passive infrared (PIR) motion sensor and photocell designed to be part of a DALI network. A superior detection pattern using a high performance faceted lens suitable for use in open plan spaces or where a larger detection range is required.

Functioning as a presence detector, the unit returns occupancy data to the DALI network. The photocell provides a lux level measurement value to the DALI network.

This unit is manufactured and especially configured to work with Fulham's **elitedali** for Niagara AX® & N4® software enabling seamless IoT connectivity

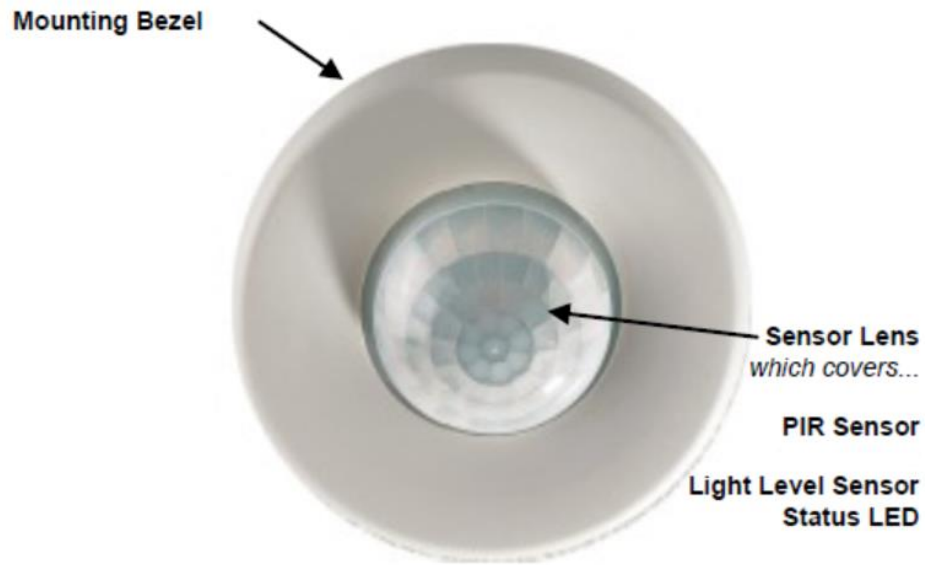


The DALI MultiSensor offers daylight-dependent control and presence detection. With its built-in intelligence and used with Fulham's **elitedali** product, it enables a Tridium Niagara Framework® Edge IoT DALI system the important ability to detect movement and to measure the lighting levels. This information when used with **elitedali** for Niagara offers highly automated lighting control including constant light level or daylight harvesting, maximising the use of natural light to minimise expense of energy to achieve required light levels. Further as part of a native Niagara Framework solution it can share data seamlessly with other non-lighting devices and subsystems both locally and remotely for operational efficiency, continuous optimization, space optimization, analytics and AI applications.

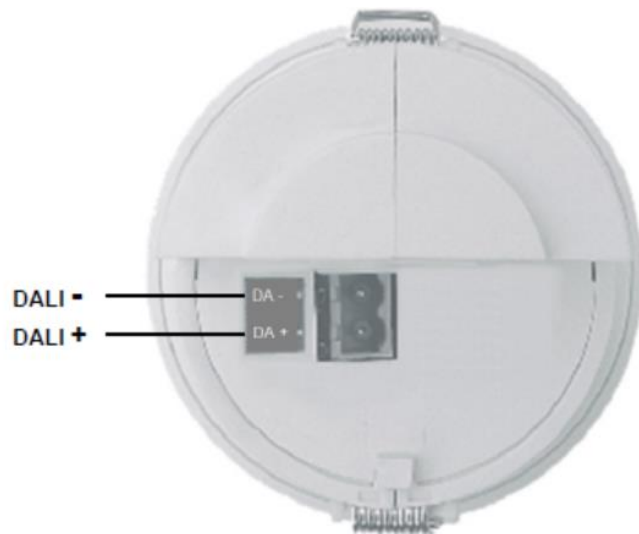
Features

- New mid-range lens with concentric lens facets for improved detection
- 360° presence and absence detection
- Ideal for open plan offices
- IP 40 rated
- 5 year warranty

Front view:

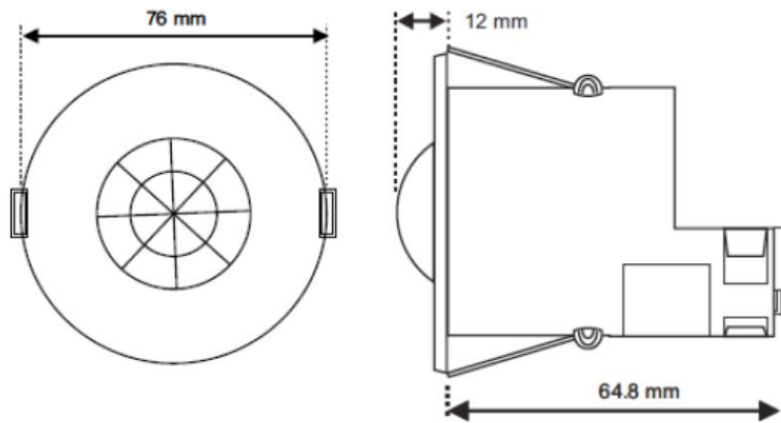


Rear view:

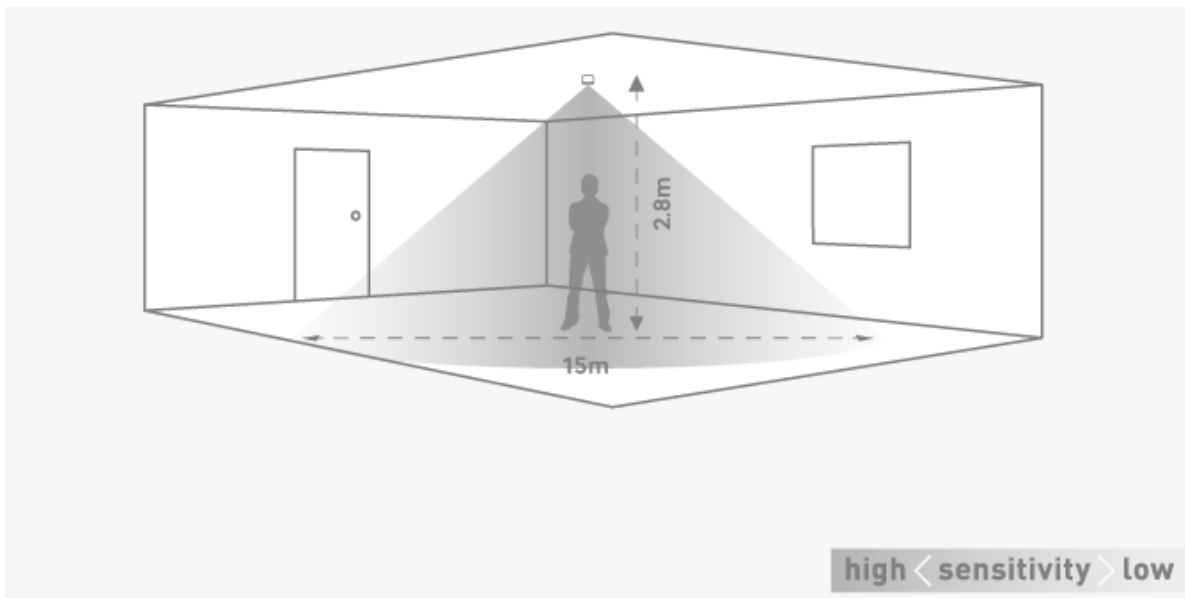


Specifications & Dimensions

Weight	0.07kg
Supply Voltage	9.5VDC—22.5VDC via DALI
Supply Current	8mA
Terminal Capacity	2.5mm ² (solid or stranded)
Material (casing)	Flame retardant ABS and PC/ABS
Compliance	EMC-2014/30/EU LVD-2014/35/EU



Detection Diagrams

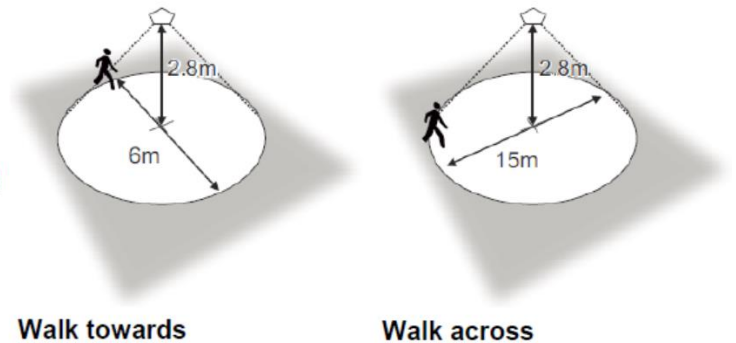


Installation

Choosing a Suitable Location

The PIR Detector is designed to be ceiling mounted and must satisfy the following criteria:

- Avoid positioning the unit where direct sunlight may enter the sensor element.
- Do not site the sensor within 1m of any lighting, forced air heating or ventilation.
- Do not fix the sensor to an unstable or vibrating surface.
- Position the sensor so that the occupants of the room fall inside the detection zone. Note that the detection zone illustrated is based on a recommended mounting height of 2.8m. A lower height will decrease the overall size of the detection zone.

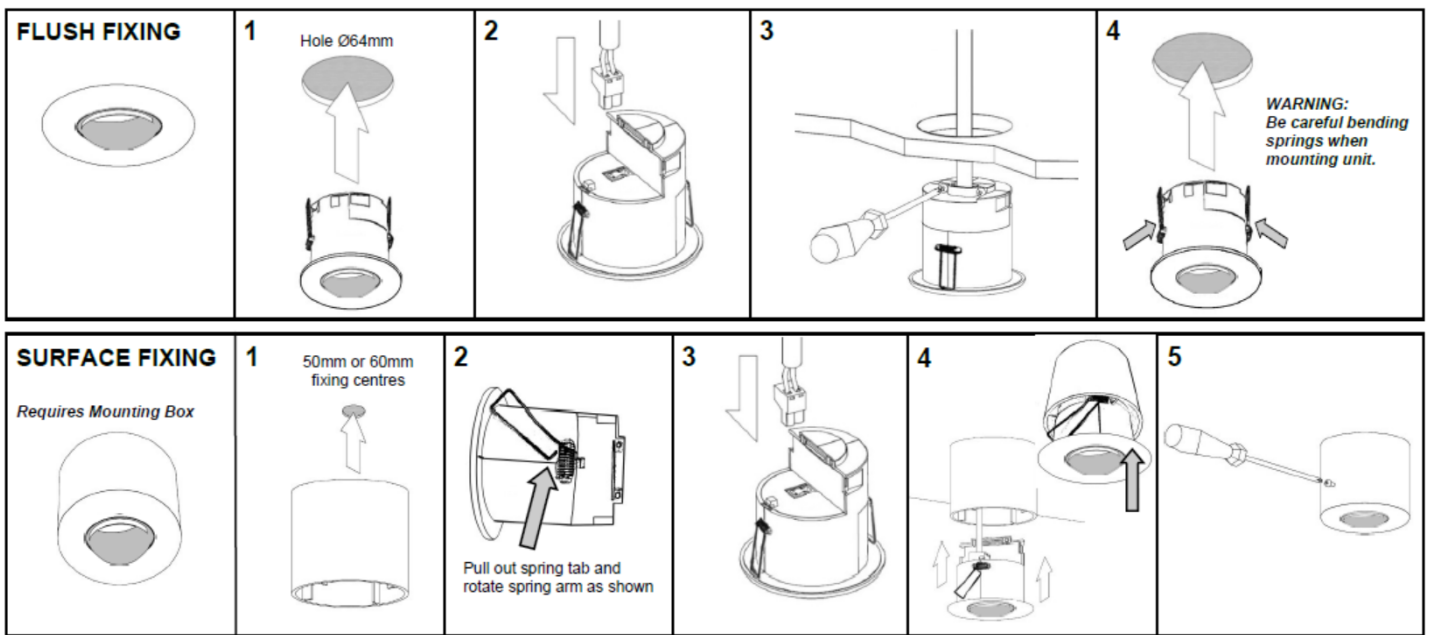


Mounting Methods

The MSensor10 detector is designed to be mounted using either –

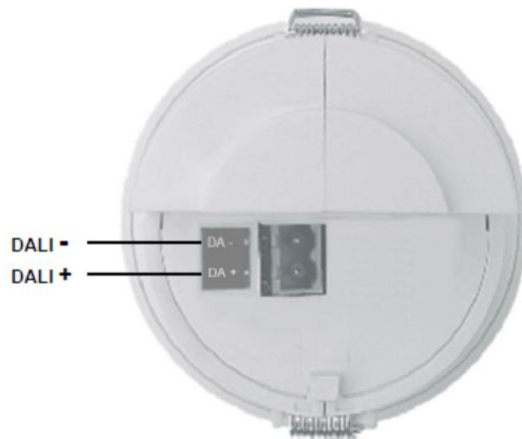
- Flush fixing (recommended), or
- Surface mount fixing, using the optional elitedali.MSen/DBB mounting enclosure

Both methods are shown below...



Wiring

The elitedali.MSen10 is connected directly to the DALI network via rear mounted connector. The device wiring is polarity insensitive.



IMPORTANT NOTICE

This device must be installed by a qualified electrician in accordance with all locally enforced regulations and codes!

Order Details

Model Number	Description
elitedali.MSen10	High Performance DALI MSensor
elitedali.Msensor/DBB	Surface mounting enclosure

Licensing Options

The **elitedali** MSensors are a Niagara Framework licensed option so it is important that when advising Fulham of how many **elitedali** Connectivity Kits are required to be licensed to a suitable Niagara platform that at the same time Fulham is advised of how many MSensor units need to be licensed to each Niagara AX or N4 platform.

Additional **elitedali** compatible DALI products are also available, [click here](#) for more details.

Contact Details

Fulham Co., Inc

Unit 9b, Intec 2, Intec Business Park, Wade Road,
Basingstoke, Hampshire, RG24 8NE, UK

Company Number: 09926697

Tel: +44 (0) 1256 818700

Email: sales.uk@fulham.com

Web: <http://www.fulhamcontrols.com>

Twitter: www.twitter.com/elitedali

LinkedIn: [elitedali for Niagara Group](#)

eLighting, elitedali, eDIM, CeP, elitedali, CeP and eDIM are the trademarks of Fulham's lighting control family of products and solutions for Tridium's Niagara Framework platforms. Tridium, Niagara AX, Niagara4, JACE and Niagara AX Framework are the registered trademarks of Tridium Inc. DALI is the registered trademark of the DiiA Standards organisation.

No part of this publication may be reproduced or transmitted in any form or by any means, electronic, mechanical, photocopying, recording, in part or in whole, without written prior permission of Fulham. We reserve the right to make changes without notice to any products herein as part of its continued product development and improvements. We do not assume any liability arising out of the application or use of any product or circuit described herein.