

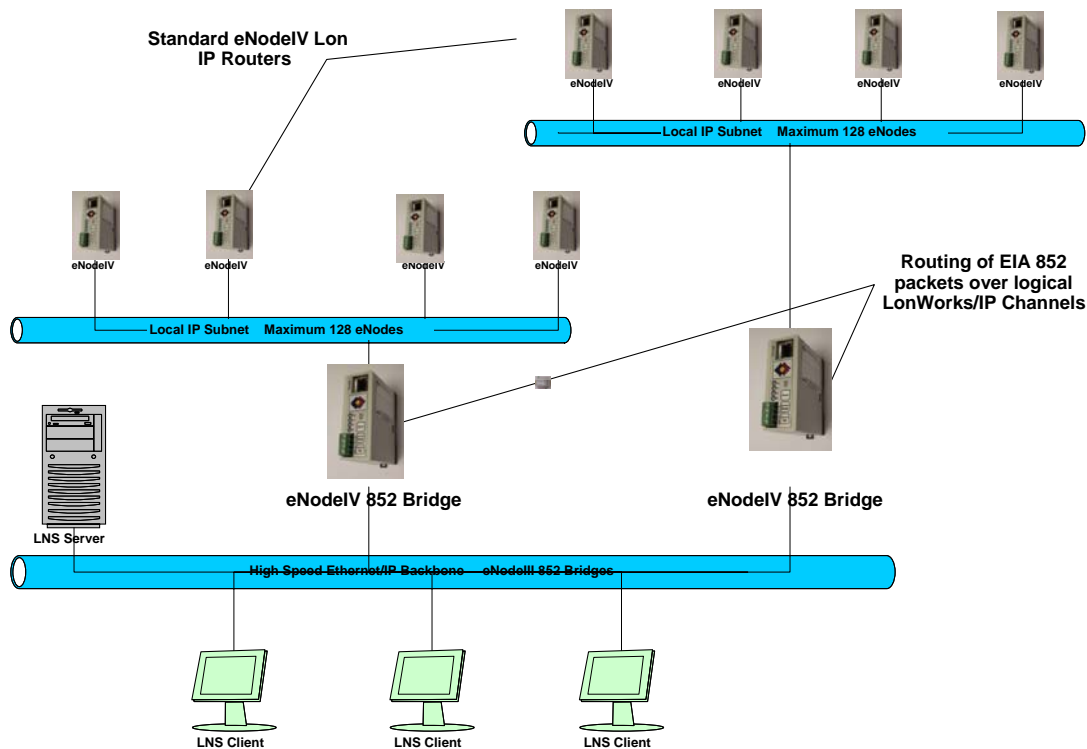


## eNodeIV™ EIA IP 852 Channel Routing

Control Network Solutions is pleased to announce that further to the already impressive feature list of the eNodeIV™ Lon IP 852 Router, the eNodeIV™ now incorporates seamless support for routing EIA IP 852 packets between logical EIA IP 852 channels.

Not only does this allow greater segmentation of LonWorks network traffic over IP Backbones, it also paves the way for integrating EIA IP 852 compliant control nodes and also overcomes the current limitation of 40 EIA IP 852 devices per network.

As is shown in the above diagram, by having many EIA IP 852 channels and implementing the eNodeIV™ 852 Bridge it is now possible to have any number of EIA IP 852 devices in your network.



For more details visit our web site [www.cnsenode.com](http://www.cnsenode.com) or Email [Sales@cnsenode.com](mailto:Sales@cnsenode.com) or call as below.