

# elitedali™ - for Niagara

smart lighting controls

[www.elitedali.com](http://www.elitedali.com)

## elitedali USB DALI Network Monitoring Software Guide

The masterCONFIGURATOR software tool is a proprietary product intended only for configuring and setting the parameters for various Tridonic DALI control units. It is to be used only in conjunction with the elitedali/DTM DALI USB PC interface unit. The installation package comprises the following three components:

- ◆ masterCONFIGURATOR
- ◆ DALI Monitor
- ◆ DALI BusServer

**WARNING ONLY THE DALI MONITOR FEATURE OF THIS SOFTWARE MAYBE USED WITH ELITEDALI FOR NIAGARA. ALL OTHER FETURES OF THIS SOFTWARE MUST NOT BE USED IN CONJUNCTION WITH ELITEDALI FOR NIAGARA AX WITHOUT THE EXPRESS WRITTEN AGREEMENT OF CONTROL NETWORK SOLIUTIONS LTD. INAPPROPRIATE USE OF THIS SOFTWARE MAY RESULT IN THE LIGHTING SYSTEM TO BECOME INOPERABLE AND CAUSE INJURY OR DEATH!**

### DALI Monitor (V2.5.3)



Type	Hex Data	Address	Command	Time	Date	Comment
IAP	FF05	Bcast	RECALL MAX LEVEL	15:56:27	07.05.2007	
IAP	FF08	Bcast	ON AND STEP UP	15:56:29	07.05.2007	
IAP	FF01	Bcast	UP	15:56:29	07.05.2007	
IAP	FF01	Bcast	UP	15:56:29	07.05.2007	
IAP	FF08	Bcast	ON AND STEP UP	15:56:29	07.05.2007	
IAP	FF01	Bcast	UP	15:56:29	07.05.2007	
IAP	FF01	Bcast	UP	15:56:29	07.05.2007	
IAP	FF02	Bcast	DOWN	15:56:29	07.05.2007	
IAP	FF02	Bcast	DOWN	15:56:29	07.05.2007	

DALI Monitor is used for monitoring the DALI control circuit. DALI Monitor records the commands on the bus and enables the DALI installation to be checked for correct operation. There are two ways in which it can be opened, either via Start⇒Programs⇒DALITools⇒DALIMonitor or via the context menu of DALI BusServer

### DALI BusServer (V2.5.9)

DALI BusServer manages the interface to the DALI bus. The server is designed so that multiple Windows applications can access this bus interface. BusServer is automatically opened when DALI Monitor is opened enabling the viewing and

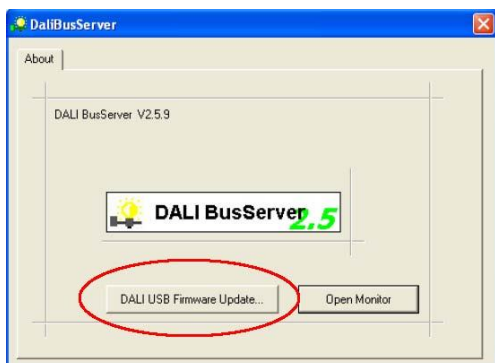
## elitedali USB DALI Network Monitoring Software Guide

recording of DALI bus commands online.

Note: As soon as DALI BusServer is running it can be accessed via the Windows task bar and can be opened by double-click on the icon.



When a DALI USB is opened by the DALI-BusServer, the firmware version is checked and an automatic update of the DALI USB is started if the version number does not match. This update normally takes about 10 to 15 seconds to complete.



In rare cases the update could fail and leave the DALI USB in boot-loader mode. In boot-loader mode the LED's on the DALI USB are switched OFF after you connect it to the USB, in normal mode one of the two LED's is constantly ON, the other indicates DALI bus activity.

In case the DALI-BusServer (V2.5.9 or higher – masterCONFIGURATOR V1.16 or higher) detects a DALI USB in boot-loader mode it displays the "DALI USB Firmware Update" button. By clicking on this button you may force an update manually. After the update the DALI-BusServer will be automatically closed. Now the DALI USB can be used with the DALI monitoring tool.

## elitedali USB DALI Network Monitoring Software Guide

In order for the masterCONFIGURATOR to operate at its optimum the following requirements must be met:

PC / Laptop	Standard
Operating System	MS Windows 2000 / XP / Vista <sub>1</sub> / Windows 7 <sub>1</sub>
Screen Resolution	Minimum XGA (1024 x 768 pixels)
Communication	USB-Connection & DALI USB

**1** "MS Windows Vista" and "MS Windows 7" compatibility only with DALI USB with firmware version 1.4 or higher (production date: August 2008)

Additional **elitedali** compatible DALI products are also available, [click here](#) for more details.

### Contact Details

#### Control Network Solutions Ltd

Studio 7, Intec 2, Intec Business Park, Wade Road  
BASINGSTOKE,  
Hampshire, RG24 8NE, England

Tel: +44 (0) 1256 818700  
Fax: +44 (0) 1256 812520  
Email: [Sales@control-network-solutions.co.uk](mailto:Sales@control-network-solutions.co.uk)  
Web: [elitedali.com](http://elitedali.com)  
Twitter: [twitter.com/elitedali](https://twitter.com/elitedali)  
LinkedIn: [elitedali for Niagara AX Group](#)

*eLighting*, **elitedali**, **eDIM**, **CeP**, *elitedali*, *CeP* and *eDIM* are the trademarks of Control Network Solutions lighting control family of products and solutions for Tridium's Niagara Framework platforms. Tridium, Niagara AX, Niagara4, JACE and Niagara AX Framework are the registered trademarks of Tridium Inc. DALI is the registered trademark of the DALI.ag.org Standards organisation.

No part of this publication may be reproduced or transmitted in any form or by any means, electronic, mechanical, photocopying, recording, in part or in whole, without written prior permission of Control Network. We reserve the right to make changes without notice to any products herein as part of its continued product development and improvements. We do not assume any liability arising out of the application or use of any product or circuit described herein.